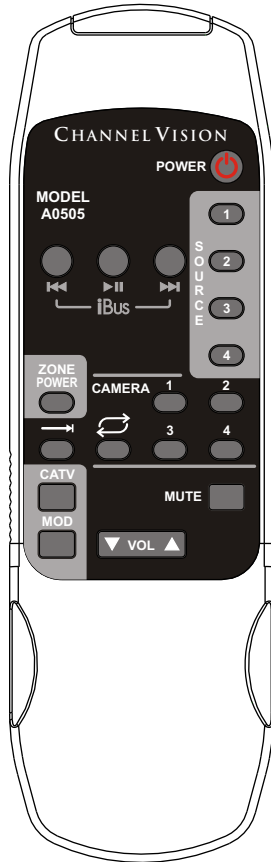


INSTRUCTIONS



A0505 **REMOTE CONTROL**

 CHANNEL VISION™

©2007 CHANNEL VISION TECHNOLOGY

The **A0505** allows you to operate many of Channel Vision's whole-house audio/video systems without needing to touch the keypad. Additionally, this remote provides shuttle controls for the A0312, A0314, AB-313 and other compatible iBus® products.

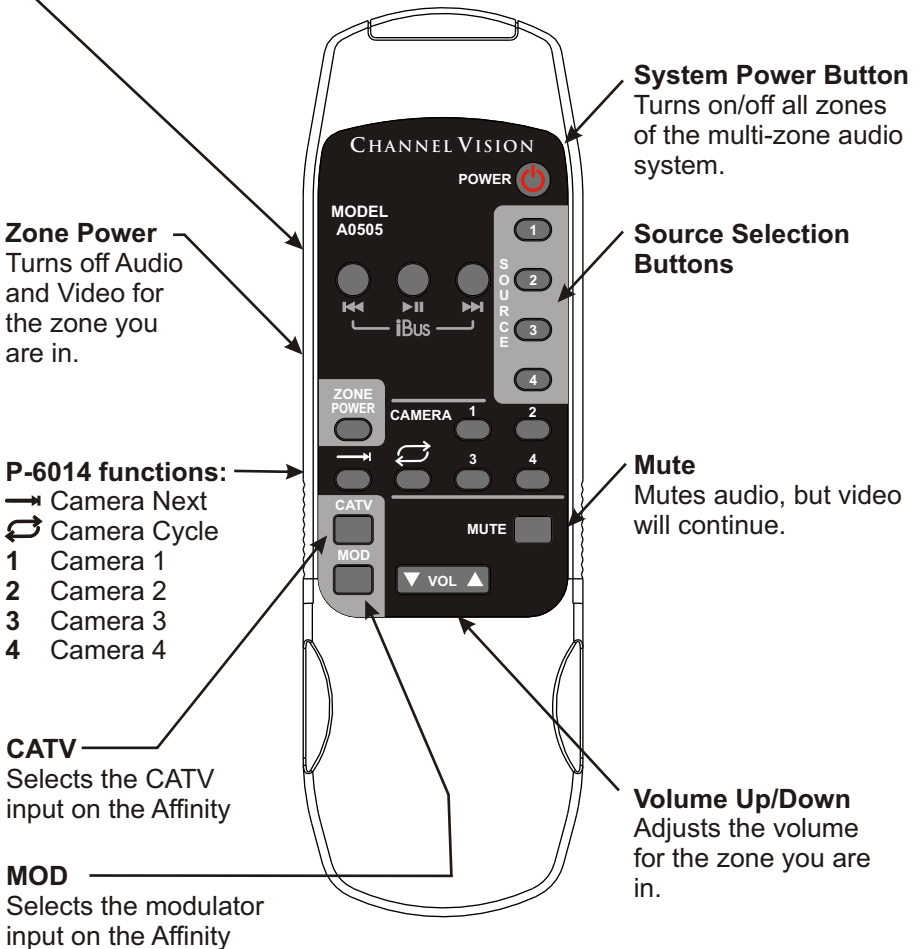
Features:

- Easily controls your whole-house audio/video system
- No programming necessary
- Compatible with: P-1044, AB-124, A4601, A4603, A4623, AB-313, A0312 and A0314

iBus Shuttle Control Buttons

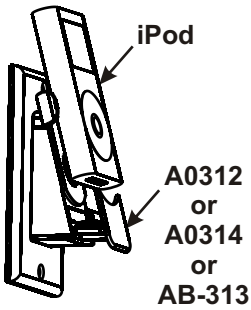
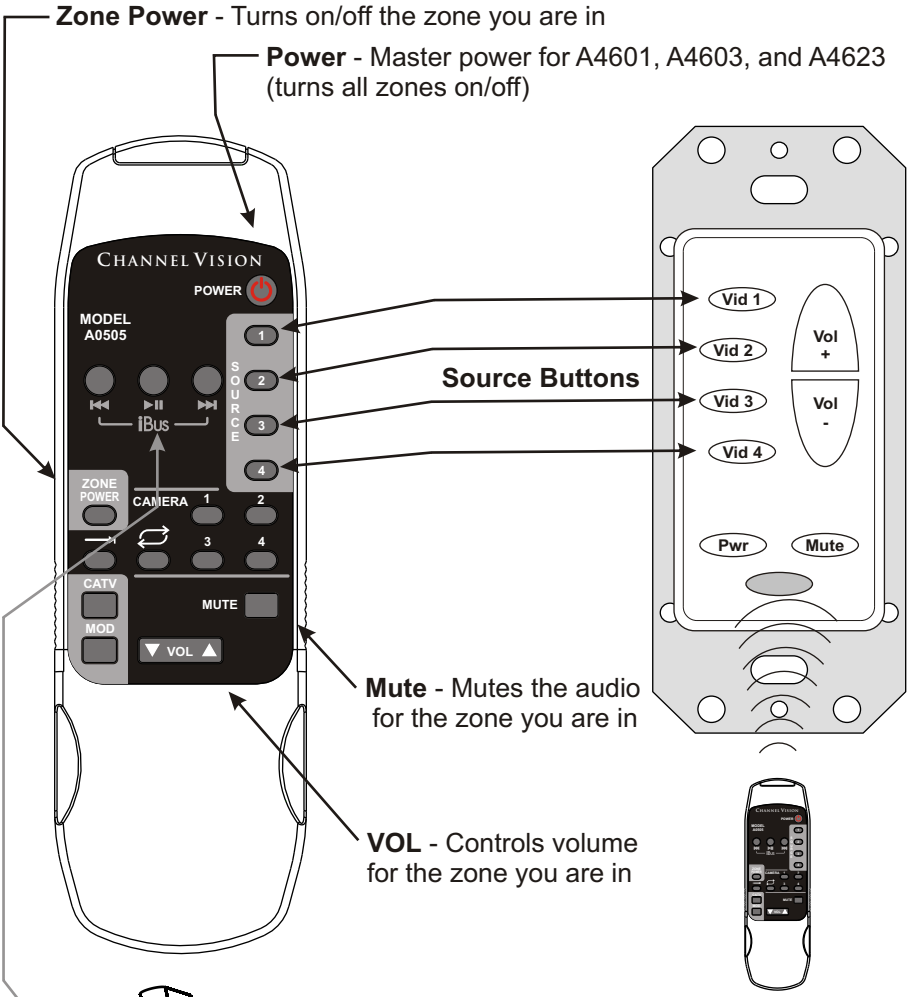
Compatible with A0312, A0314, AB-313 and other iBus wall docking stations.

Not compatible with AB-311



Using the A0505 remote control...

The A0505 is designed to allow you to control your A4601, A4603, or A4623 without having to touch the buttons on the A0127. Simply point the A0505 remote control at the IR sensor located at the bottom of the A0127 and press the desired button.

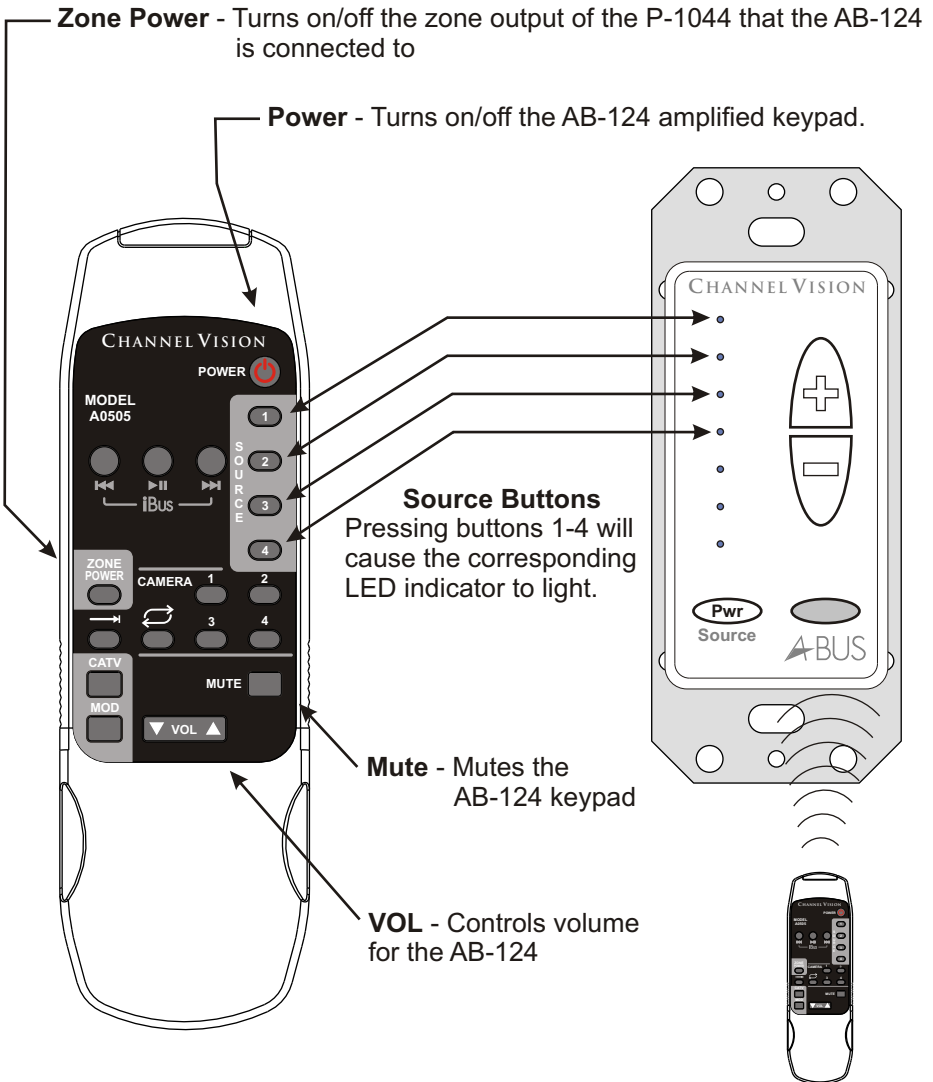


Using the A0505 remote with iBus...

Your iPod's shuttle controls can be operated from the A0505 when it is docked in a compatible iBus wall station.

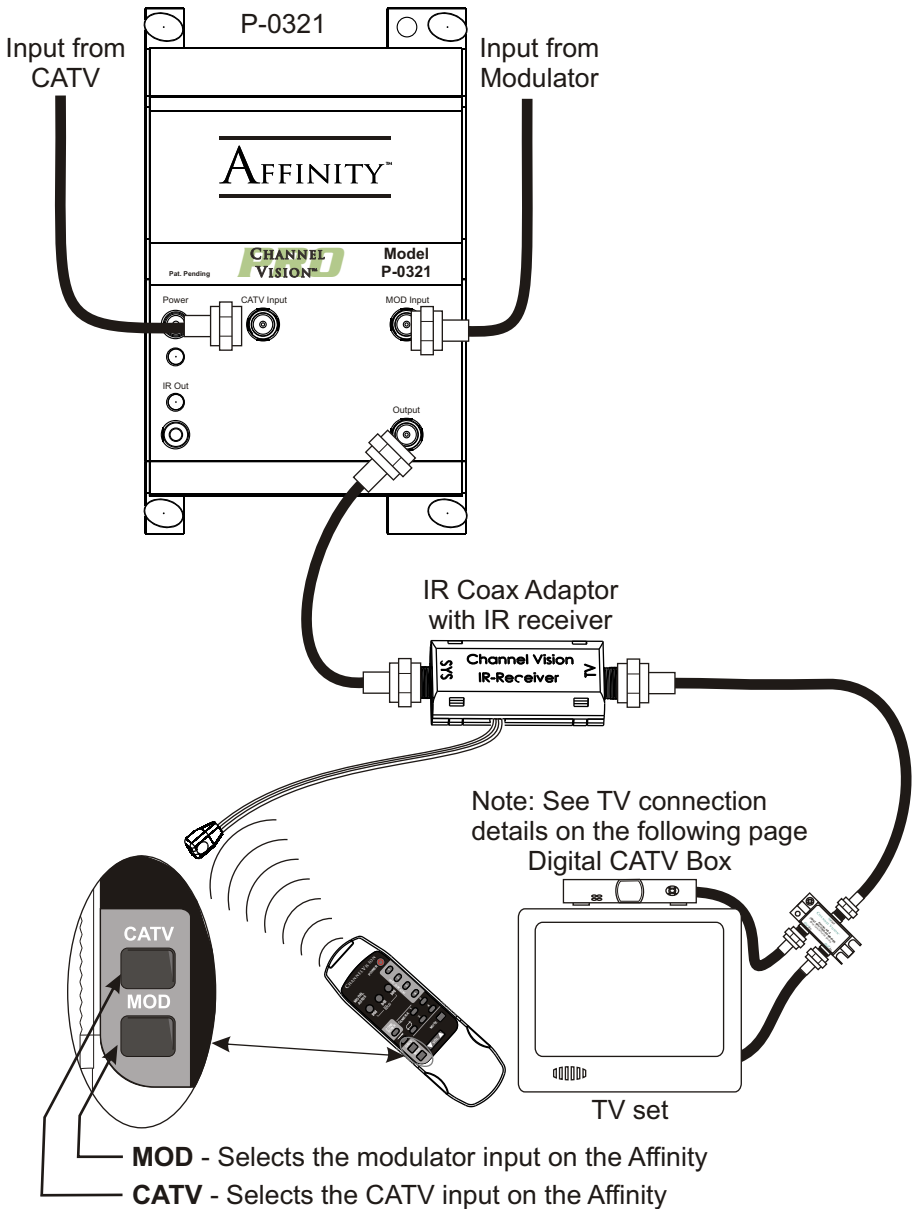
Using the A0505 remote control... Multi-Source A-BUS

The A0505 is designed to allow you to control your P-1044 without having to touch the buttons on the AB-124 keypad. Simply point the A0505 remote control at the IR sensor located at the bottom of the AB-124 and press the desired button.



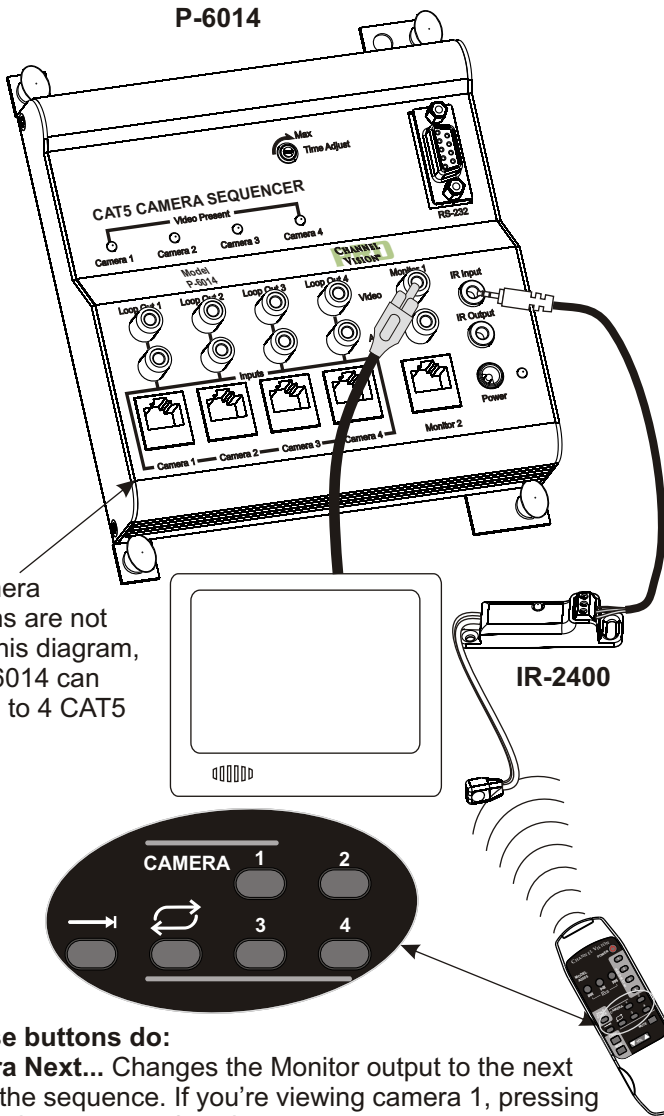
Using the A0505 remote control... P-0321 or P-0328

The A0505 is designed to control your Affinity (P-0321 or P-0328), enabling you to easily switch between two different RF signals. Just point the remote to an IR receiver connected to the coax-based IR system and the IR signal will travel back to the Affinity and change it to the desired input.



Using the A0505 remote control... P-6014 Camera Sequencer

The A0505 is designed to allow you to control the switching functions on your P-6014. The A0505 allows you to choose any of the 4 cameras or select the Auto Cycle mode.



Note: Camera connections are not shown in this diagram, but the P-6014 can support up to 4 CAT5 cameras.

What these buttons do:

→ **Camera Next...** Changes the Monitor output to the next camera in the sequence. If you're viewing camera 1, pressing it once will show camera 2 and so on.

↻ **Camera Cycle...** Causes the Monitor output to sequence through the cameras. The time adjustment on the P-6014 determines how long each camera view is displayed before switching to the next one.

1, 2, 3, 4 **Camera Views...** Changes the Monitor output directly to the corresponding camera input.

A0505 IR codes in HEX format...

Some high-end programmable remote controls allow installers to input and store IR codes in HEX format. These codes are listed below:

All Power: 0000 006D 0000 000C 001F 001F 003F 001F 001F 003F 001F 001F 001F 001F 003F 001F 001F 001F 003F

iBus Play/Pause: 0000 006D 0000 000B 001F 001F 001F 001F 003F 003F 001F 001F 001F 001F 003F 001F 001F 001F 003F

iBus Skip <<: 0000 006D 0000 000B 001F 001F 003F 001F 001F 003F 001F 001F 001F 001F 003F 001F 001F 003F

iBus Skip >>: 0000 006D 0000 000A 001F 001F 001F 001F 003F 003F 001F 001F 001F 001F 003F 003F 001F 003F

Mute: 0000 006D 0000 000A 001F 001F 001F 001F 003F 003F 001F 001F 001F 001F 003F 003F 003F 003F

Source 1: 0000 006D 0000 000B 001F 001F 003F 001F 001F 003F 001F 001F 001F 001F 003F 003F 001F 003F

Source 2: 0000 006D 0000 000C 001F 001F 001F 001F 0040 0040 001F 001F 001F 001F 001F 001F 001F 001F 0040

Source 3: 0000 006D 0000 000B 001F 001F 001F 001F 003F 003F 001F 001F 001F 001F 003F 003F 003F 003F

Source 4: 0000 006D 0000 000B 001F 001F 001F 001F 003F 003F 001F 001F 001F 001F 003F 003F 001F 003F

Volume Down: 0000 006D 0000 000C 001F 001F 0040 001F 001F 0040 001F 001F 001F 001F 0040 001F 001F 0040

Volume Up: 0000 006D 0000 000C 001F 001F 001F 001F 003F 003F 001F 001F 001F 001F 003F 003F 001F 003F

Zone Power: 0000 006D 0000 000C 001F 001F 001F 001F 0040 0040 001F 001F 001F 001F 0040 001F 001F 0040

Camera 1: 0000 006D 0000 000B 001F 001F 003F 001F 001F 003F 001F 001F 001F 001F 003F 001F 001F 003F

Camera 2: 0000 006D 0000 000C 001F 001F 003F 001F 001F 003F 001F 001F 001F 001F 003F 001F 001F 003F

Camera 3: 0000 006D 0000 000A 001F 001F 001F 001F 003F 003F 001F 001F 001F 001F 003F 003F 003F 003F

Camera 4: 0000 006D 0000 000B 001F 001F 001F 001F 003F 003F 001F 001F 001F 001F 003F 003F 001F 003F

Camera Next: 0000 006D 0000 000C 001F 001F 001F 001F 003F 003F 001F 001F 001F 001F 003F 001F 001F 003F

Camera Cycle: 0000 006D 0000 000B 001F 001F 003F 001F 001F 003F 001F 001F 001F 001F 003F 003F 001F 003F

CATV: 0000 006D 0000 000B 001F 001F 003F 001F 001F 003F 001F 001F 001F 001F 003F 003F 001F 003F

MOD: 0000 006D 0000 000B 001F 001F 001F 001F 003F 003F 001F 001F 001F 001F 003F 003F 001F 003F

 **CHANNEL VISION™**
2 Year Limited Warranty

Channel Vision Technology will repair or replace any defect in material or workmanship which occurs during normal use of this product with new or rebuilt parts, free of charge in the USA, for two years from the date of original purchase. This is a no hassle warranty with no mail in warranty card needed. This warranty does not cover damages in shipment, failures caused by other products not supplied by Channel Vision Technology, or failures due to accident, misuse, abuse, or alteration of the equipment. This warranty is extended only to the original purchaser, and a purchase receipt, invoice, or other proof of original purchase date will be required before warranty repairs are provided.

Mail in service can be obtained during the warranty period by calling (800) 840-0288 toll free. A Return Authorization number must be obtained in advance and can be marked on the outside of the shipping carton.

This warranty gives you specific legal rights and you may have other rights (which vary from state to state). If a problem with this product develops during or after the warranty period, please contact Channel Vision Technology, your dealer or any factory-authorized service center.

 **CHANNEL VISION™**
www.channelvision.com

234 Fischer Avenue, Costa Mesa, California 92626 USA
(714)424-6500 • (800)840-0288 • (714)424-6510 fax
email: techsupport@channelvision.com